



THE ISLAND VI FORM PROSPECTUS 2025



The Island VI Form
ASPIRE AND ACHIEVE



"There are no two ways about it, A levels are a lot harder than GCSEs, but please don't let that put you off! They are difficult because they are more in-depth, and that depth allows you to really engage with subjects that you are passionate about. The teachers are all incredibly experienced and knowledgeable about their subjects, so you can be sure you will get the support you need."

Joe Davies, Alumnus, History & Politics at University of Oxford

Contents

4	Timeline
5	HISP Multi Academy Trust
6	Welcome
7	Values and Expectations
8	Facilities
9	EEP - Employability, Enrichment and Pastoral
10	EPQ Extended Project Qualification
11	Student Voice
12	Support & Careers Guidance
13	Mentors and UCAS
14	The Duke of Edinburgh Award
15-16	Entry Requirements
17	Pathway One: A Levels
18	Pathway Two: Vocational
19-20	Frequently Asked Questions
21-40	Courses
41-42	Application Form





Timeline

Your GCSE year will be full of revision, preparation for your exams and decisions about what comes next. Applying for your place with us is a simple process - following the timeline below.

Interview: November 2024 - Onwards

Your application will be acknowledged and you will then be invited to attend an interview with the Head of VI Form; this will either be at The Island VI Form or at your own school, or it might be virtual. This will be an informal chat about your plans, what you would like to study and it's our first chance to get to know you.

Pre-Enrolment Day: June/July 2025

This is an opportunity for you to come into the VI Form and spend the day finding out about your courses, meeting staff and making new friends. We will ask you to provide us with a photograph for your student lanyard and collect your new starter information, ready for September.

Application: November 2024 - March 2025

You can apply to join us from November 2024 and we would like as many applications as possible returned to us by the end of March 2025. We will still accept applications after this date, but your choice of subjects may depend on availability. The application form is in the back of this prospectus or can be downloaded from our website.

Offer: Following your interview

Following your successful interview, we will write to you with an offer of a place. Provisional course choices will be subject to your GCSE results.

Enrolment: August 2025

In the new starter information, there will be a personalised appointment for you to attend a one-to-one meeting at the end of August/beginning of September. You will discuss your GCSE results, finalise your subject choices and collect your student lanyard, timetable and welcome pack.

One Trust, Our Trust

HISP Multi Academy Trust

OUR TRUST was formed in January 2020. We now have eight schools: Thornden, Highcliffe, Test Valley and Crofton Schools, and Portwood and Tanners Brook Primary Schools, joined on 1 July 2024 by the Isle of Wight's Carisbrooke College and Medina College (including The Island VI Form). We are delighted to be in discussions with a number of other schools also interested in joining.



OUR TRUST's purpose is courageous, transformative education for all. Celebrating diversity and inclusion, **our vision** is to create and promote supportive environments that eliminate barriers to education and empower individuals.

Our mission, quite simply, is to create **One Trust – Our Trust** through careful growth and sustainable school improvement; the development and embedding of a professional continuum; by attracting high quality trainees to our initial teacher training Inspiring Future Teachers programme; by nurturing talent; providing high quality development for all and ensuring that we grow our own inspirational school leaders.

Our values are fundamental to how we work:

Courage: We embrace challenges with bravery and resilience, empowering our pupils and our people to take bold steps toward growth and social mobility.

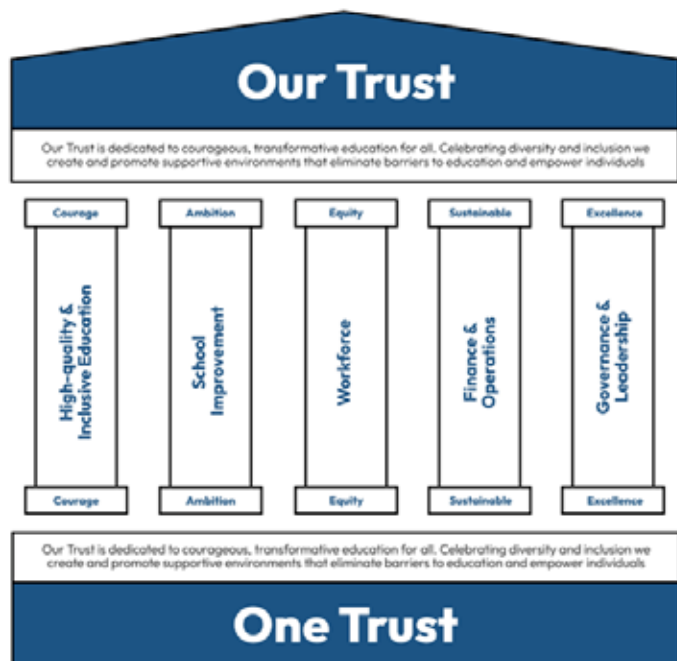
Ambition: We cultivate high aspirations for all, striving relentlessly to unlock the full potential of every child and individual in our community.

Excellence: We commit to the highest standards in teaching, learning, and leadership, ensuring exceptional outcomes and opportunities for every pupil.

Sustainable: We build a future-focused, sustainable environment that nurtures long-term growth, well-being, and success for our pupils and the wider community.

Equity: We champion fairness and inclusion, ensuring every pupil has the support and opportunities they need to succeed, regardless of their background.

Pupils First: We put pupils at the heart of everything we do, guiding every decision and action with their best interests in mind, ensuring they thrive academically and personally.



Mission

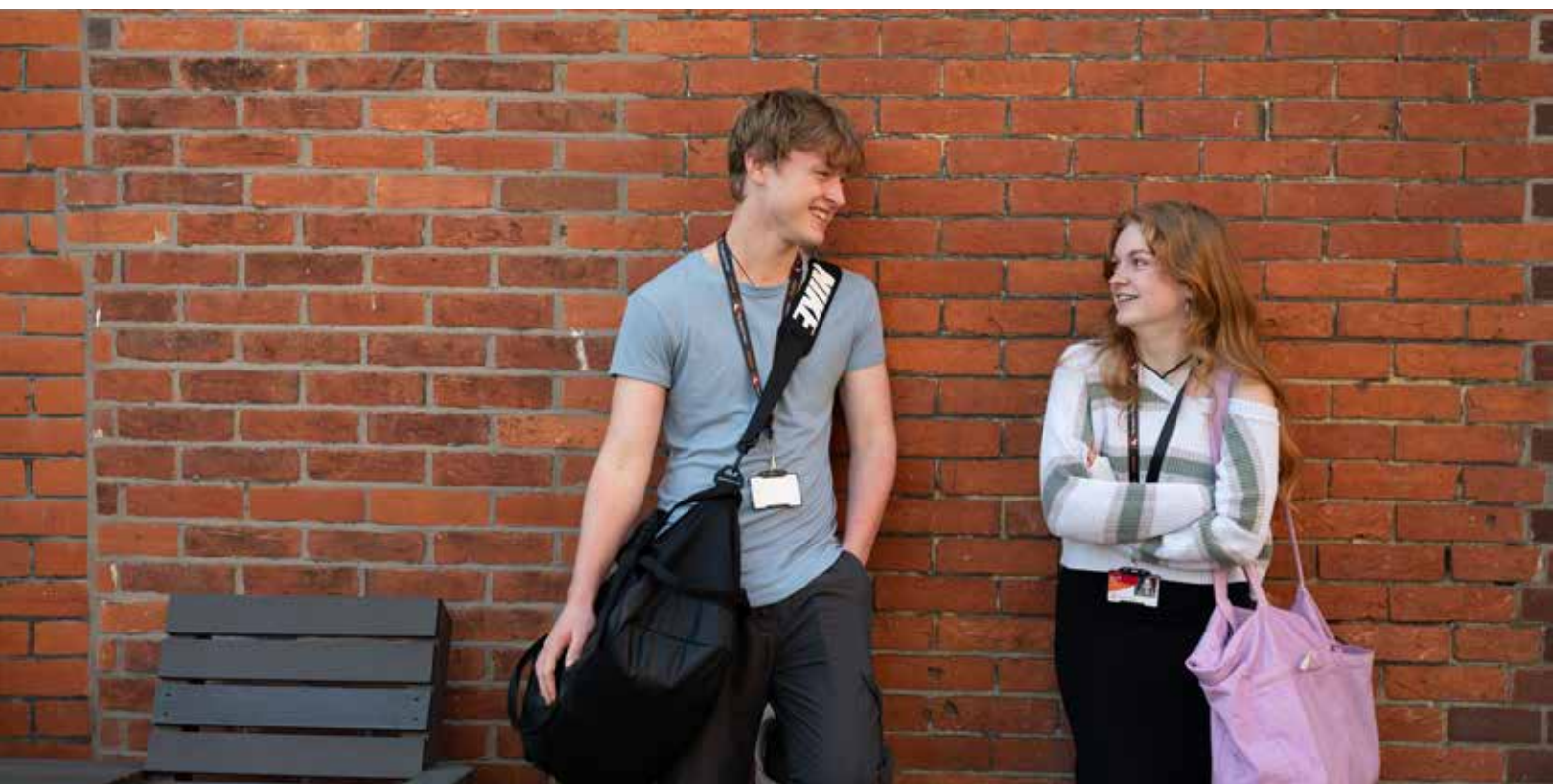
Vision

To help us navigate through our mission, we have adopted the five strategic pillars used in the Department of Education's quality assurance model: High Quality and Inclusive Education, School Improvement, Governance and Leadership, Workforce and Finance & Operations.

Join us on our journey to empower every learner, where your child will be supported by our dedicated team and guided by our values to achieve, succeed, and thrive in a nurturing and ambitious environment

Vision

Mission



Welcome

The Island VI Form welcomes students from all schools and academies across the Island. Our learning facilities are of a standard to rival any national learning institution and the best way to appreciate the atmosphere is to visit us and see the VI Form in action.

Students have access to a wide range of A level and level 3 vocational programmes, alongside extra-curricular activities. Being the largest sixth form provider of A levels on the Island, enables us to have the ability to offer minority subjects, nevertheless, a minimum of six to ten students (depending on the subject) will be required to ensure a course can run.

The Island VI Form is an ideal bridge between school and higher education, or employment and gives students more freedom and responsibility. Students are encouraged to manage their own time and develop the study and work skills needed for university, or the world of work.

We are committed to ensuring teaching and learning is of the highest quality. We have in place a rigorous programme of monitoring to ensure that not only are our students well taught, but that they are supported, through a range of classroom activities, to become active, inquisitive and independent learners. High levels of attendance are also required; over 95%, if students are to maximise their learning opportunities. Personal development is also very important to us and we provide advice and guidance to help students manage their transition from GCSE to A level and greater independence.

Our VI Form is continuing to grow and we hope that you will join us to share in our success. I look forward to meeting you and do hope you will take the opportunity to see what we have to offer. We wish you every success in your forthcoming GCSEs and post 16 experiences.

Dave Mumford
Head of VI Form





Values and Expectations

Each member of The Island VI Form has unique needs and we aim to unlock each student's potential. Our aim, through an experienced and successful team of teachers and support staff, is to make all our students increasingly self-reliant in their learning whilst giving them every possible encouragement and support.

Students will be treated with respect and given the freedom to manage their own time and study. They are expected to fully attend all of the following; timetabled lessons, study periods, mentoring sessions and a range of extra-curricular activities.

All courses require students to spend a minimum of four hours per week outside of the classroom on independent guided study. Students are encouraged to use their study periods to undertake this work.

We are committed to the following:

- Providing a challenging and innovative learning culture, engendering a love of learning.
- A culture of commitment and hard work that will enable the achievement of potential.
- Securing mutual respect and a positive attitude towards learning.
- Creating an inclusive, supportive community where students value one another.





Facilities

The Island VI Form is a dedicated 16-19 college situated in the centre of Newport. With a wide range of facilities and teaching spaces, the site has a university campus feel in which students thrive.

- Science has three fully equipped, university quality laboratories with integrated IT suites.
- IT facilities are excellent with six dedicated IT suites, including a specialist music and media technology suite, that is complementary to the on-site recording studio and green screen studio. The student study area is also fully equipped with PCs and is a silent work area, accessible to students throughout each day. Full WiFi coverage ensures access to IT across the whole site.
- The dedicated art block includes specialised teaching areas and equipment, two computer suites and a photography darkroom.
- Design technology has a fully equipped studio for fashion and textile work.
- There are three large common rooms, one for quiet working; and our cafe. The cafe is located next to the main hall which has a pool table and table tennis tables.
- A building lift and stairlifts give improved access for disabled students to a wide range of curriculum provision.
- Expressive arts facilities have been created on site and are used for the teaching of specific subjects, such as drama and theatre studies.
- A bright and well equipped gym enables students to keep fit and healthy, at zero cost! Students must complete an induction session and health questionnaire before individual access is granted via their lanyard.
- A dedicated SEND Hub, welcomes students with a range of educational needs and provides a place in which to both work alongside specialist staff, or just relax.





EEP Employability, Enrichment and Pastoral

College life is much more than just lessons and we know that the most memorable event in a student's life is often the performance, the match, the trip abroad or the work experience placement. VI Form students are encouraged to take part in a wide variety of activities which enable them to develop additional skills and develop their expertise and interests in other areas.

We believe that if we are to help students become fully rounded individuals and responsible members of the community, we must offer them a range of activities and challenges beyond the normal classroom. Enrichment is an opportunity to try something new. It can be just for fun or a way to gain another qualification to support your university entry or to boost your CV. All students are expected to participate in some form of enrichment. Some of the opportunities available are listed below:

- Duke of Edinburgh's Award
- Opportunities within the performing arts including performances at the Isle of Wight Festival, Christmas music and carol concerts and the College's annual drama productions
- Learning a language
- Young Enterprise Challenge
- Dance Live!
- Pre-driver instruction and practical lessons
- First aid qualifications
- Visits to London art galleries and theatres
- Foreign travel
- Debating society
- Mock law trial activities
- Work experience
- Visits to higher education colleges
- Community service ranging from supporting students with special needs in PE to environmental projects and work in local hospitals, playgroups or retirement homes
- Charity fundraising events such as Macmillan Coffee Morning, Red Nose Day and the IOW Radio Christmas Toy Appeal
- Participation in groups which take community responsibility such as IOW Youth Council and other Island groups



EPQ Extended Project Qualification

The extended project qualification is an extra, optional course which has a dual benefit: it helps you to understand how to study at a higher level, and allows you to become an expert in a topic you've always wanted to know more about.

The Extended Project Qualification (EPQ) is a part A Level which you can opt to study in year 13. You will learn academic research and project development skills essential for University or your future career, whilst earning extra UCAS points and also showing employers your unique interests and independent skills.

Many universities will reduce their offers for candidates with a strong EPQ, making you more competitive if you choose to go to university. Equally, the EPQ can give you a superb advantage when applying for jobs or apprenticeships after VI Form, it will also give you the skills to excel when you get your place or position.

Equivalent to half an A level, students are required, with appropriate supervision, to:

- Choose an area of interest
- Draft a title and aims of the project for formal approval by the centre.
- Plan, research and carry out the project (either written or creative).
- Deliver a presentation to a non specialist audience.
- Provide evidence of all stages of project development and production for assessment.
- There will be some taught sessions which you have to attend but most of this work is completed independently in your own time to staged deadlines.





Student Voice

At The Island VI Form, we are continually seeking to improve the service we offer to students, their parents and the community. As part of our development strategy, we listen to the voices of our students and give them the opportunity to have their say in the running of the VI Form. The Student Voice enables students to communicate their ideas and opinions to each other, their parents and the wider community. It is a way of ensuring that each voice is heard and has the ability to make a difference.

The Student Voice is made up of selected student representatives from years 12 and 13. The student body can contact their representatives with suggestions for areas of improvement or concern. Student Voice then meets with the Head of School on a weekly basis to discuss matters brought to their attention. Once thoroughly discussed, improvements may be made around the site.

The impact of Student Voice is continually being felt. Examples include: feedback surveys to improve the teaching and learning experience of all students; improved decor and facilities; a silent walk in support of Remembrance Day; Open Days; Christmas and other seasonal parties and various fundraising activities.





Support & Careers Guidance

In the relatively short time you are at The Island VI Form, you will be making decisions which will have a huge impact on your career and your future. We aim to maximise your range of choices and provide the support and guidance to help you make the best decisions for you.

We will always take that extra step to help you achieve your potential. We have a dedicated Information, Advice and Guidance team based on site, who provide a wide range of opportunities, such as:

- Further and Higher Education events
- Careers fairs (in-house and external)
- Mock interviews
- One-to-one careers advice sessions
- University presentations and trips
- Gap year information sessions
- Vast variety of UCAS events
- Voluntary work
- National Citizen Service
- Specific medical/medicine events
- Access to Southampton scheme
- Business start up information
- Work experience
- Careers and finance day

A dedicated, professional Student Services Support team offer encouragement, support and guidance. You will be able to regularly review your academic and individual progress with the Support Officers and they will help you with your plans for higher education, training or employment in the future.

The IAG department (based within Student Services) has a wide range of resources for students; we have careers guides, apprenticeship publications, online resources as well as a wealth of university prospectuses.

All students can benefit from a work experience placement and this plays a vital role, giving students the opportunity to develop valuable skills, knowledge and experience. Support can be given to students in finding suitable placements.



Mentors and UCAS

Mentors provide support for students throughout their post-16 studies. Meeting with students in small groups and individually on a regular basis, enables staff to know each student and identify their needs. Whether considering university, applying for apprenticeships or employment, mentors will guide and advise every step of the way.

With over 300 course providers and around 100,000 courses across the UK, we're here to help you follow your path to higher education.

Our experienced team will help you every step of the way through the UCAS process. We will support you to ensure that your personal statement is going to get you noticed and secure the interviews you want at university.

Students considering Oxbridge or medicine/dentistry will receive a tailored programme of events to ensure they are best equipped for the application and interview process. We are proud of the high success rate of our students who secure these sought after interviews and then go on to take their places at some of the most prestigious universities across the country.





The Duke of Edinburgh's Award

A life-changing experience. A fun time with friends. An opportunity to discover new interests and talents. A tool to develop essential skills for life and work. A recognised mark of achievement; respected by employers. The Duke of Edinburgh's Award is many things to many people, supporting generations to successfully navigate adult life.

We encourage our students to participate in the DofE programme at one of three progressive levels which, when successfully completed, leads to a Bronze, Silver or Gold Duke of Edinburgh's Award.

Any young person can do their DofE, regardless of ability, gender, background or location. Achieving an award is not a competition or about being first. It is all about setting personal challenges and pushing personal boundaries.

There are four sections to complete at Bronze and Silver level and five at Gold. They involve helping the community/environment; becoming fitter; developing new skills; planning, training for and completing an expedition and, for Gold only, working with a team on a residential activity.

Achieving an award will give you the skills, confidence and an edge over others when you apply for university or a job. Beyond your academic achievements, universities want to see evidence of so called 'soft skills' that you have developed through extra-curricular activities, such as communication,

commitment, leadership and teamwork. Your DofE Award is a fantastic way to demonstrate and evidence these skills in practice.

Our young people volunteer their time with many of the charitable organisations across the Island. They have developed many new and exciting skills such as medieval sword fighting, beekeeping, Warhammer, Mandarin conversation and origami as well as the more traditional ones like first-aid, learning to drive or becoming a sports coach. Groups plan and complete their own expeditions under the guidance of our qualified staff.

The Gold groups mainly operate in the Brecon Beacons, whilst Silver and Bronze generally use the New Forest and South Downs to journey through. We have an excellent expedition store with high quality rucksacks, tents and stoves for the students to use; including seven hybrid bikes with trailers. These have been as far as France and Wales in recent times.



Entry Requirements

General entry requirements into The Island VI Form are a minimum of five 9 to 5 grades at GCSE for A levels / Level 3 courses. However, this may be higher for certain courses.

Most subjects have specific entry requirements, which can be found in the table on the next page. If you do not meet these requirements, an interview will be necessary with the Head of School and possibly parents or carers to determine your suitability for the course and a trial period may be agreed.

For students with an EHCP, in addition to completing The Island VI Form application form, parents/carers also need to inform the SEND team at the Local Authority that they wish The Island VI Form to be consulted as a placement.

The SENDCo will then receive a copy of the EHCP, along with the most recent Annual Review paperwork and will respond to the LA formally regarding our ability to meet the student's specific needs and provision required.



Course Entry Requirements

Applied Science	6 - Double Science or Merit at Level 2 Diploma in Science 5 - English 5 - Mathematics
Art & Design	6 - Art & Design/Fine Art 5 - English
Biology	6 - Biology (triple) 6 - Double Science 6 - Mathematics 6 - English
Business	5 - English 6 - Mathematics
Chemistry	6 - Chemistry (triple) 6 - Double Science 6 - Mathematics 6 - English
Classical Civilisation	6 - English
Computer Science	5 - English 6 - Mathematics
Criminology (Applied Diploma)	6 - English 6 - Mathematics 6 - Science
Drama & Theatre Studies	6 - English
Early Childhood Development	5 - English 5 - Mathematics
English Language	5 - English Language, English Literature or English
English Literature	6 - English Language, English Literature or English
Fashion & Textiles (Diploma)	5 - Fashion, Textiles or Art (if none of these have been studied, a portfolio of work will be required) 5 - English
Film Studies	5 - English
Geography	6 - Geography 5 - Mathematics 5 - English
Geology	6 - Chemistry & Physics (triple) 6 - Double Science 6 - Mathematics 6 - English

Government & Politics	6 - English
Graphics	6 - Graphics or Art 5 - English
Health & Social Care (BTEC)	6 - English 5 - Mathematics
History	6 - History 6 - English 6 - Mathematics
Law	5 grades 9-5 (at least 2 at grade 6) including English Language and Mathematics
Mathematics	7 - Mathematics
Further Mathematics (must also be taken with Mathematics)	7 - Mathematics
Media Studies	5 - English
MFL: French/Spanish	6 - MFL
Music	6 - Music and Grade 5 standard instrument skill
Music Technology	5 - Music or Merit at BTEC
Photography	6 - Art & Design 5 - English High quality digital camera
Physics	6 - Physics (triple) 6 - Double Science 6 - Mathematics 6 - English
Psychology	6 - English 6 - Mathematics 6 - Science
Religious Education	5 - English
Sociology	6 - English
Sport (BTEC)	5 - Physical Education or Level 2 Pass in Sports Studies 5 - Science
Travel & Tourism (BTEC)	5 - English



Pathway One: A Levels

The A level pathway is a natural choice for you if you have enjoyed and been successful on your GCSE courses. A levels offer you the chance to focus your attention on a smaller number of subjects, building your knowledge and understanding in the areas in which you have proven strengths and strong interests.

You will choose three subjects from a wide range of available courses to study over two years. Our advisors will help you choose the ideal combination.

To succeed on an A level programme you will need to achieve 9-5 grades in at least 5 subjects at GCSE. Most A level students have several grade 6s or higher, especially in the subjects they want to study at A level.

Some students may take the opportunity to select four subjects if their academic profile supports this choice (8 or 9 grades at GCSE).

Some A levels involve a combination of examinations and coursework and all exams will be held during the summer term at The Island VI Form site.

We now offer 28 different A level options; the widest range offered by any provider on the Isle of Wight.





Pathway Two: Vocational

BTEC or Applied Diplomas are a natural choice if you have done well at GCSE but now wish to move on to a course related to your career plans.



Some Advanced Vocational courses, for instance BTEC level 3 Diplomas, can be combined with A level courses. Vocational courses are usually assessed through assignment work and exams.

These courses will really suit you if your coursework grades are always better than your examination marks. You will have an idea of your grades as you work through the course and may have an opportunity to resubmit any work that may require improvement.

Subjects such as fashion and textiles or health and social care allow you to choose a National Diploma - which is equivalent to 2 A levels (2 options).

We have expanded our offer of vocational courses to now include:

- Applied Science
- Criminology
- Early Childhood Development
- Fashion and Textiles
- Health and Social Care
- Sport
- Travel and Tourism



Frequently Asked Questions

What is the entry criteria for The Island VI Form?

All students will be expected to have at least five 9-5 grades to be eligible to join The Island VI Form. Specific criteria for individual subjects can be found on the course entry requirements overview page. If a student does not meet these requirements, an interview will be necessary with the Head of VI Form to determine suitability for the courses selected.

All students will receive an invitation to attend an informal interview with the Head of VI Form as part of the standard application process. You will be able to discuss courses, student life and enrichment activities.

What is the dress code?

While VI Form students are not expected to wear a uniform, we ask that students ensure that their dress is smart and appropriate to our educational environment. Health and safety, cultural awareness and decency will be the guidance used in making decisions on what is appropriate.

Students and staff must wear identification lanyards while on site to comply with our safeguarding policy. We are very keen for students to be involved in determining what is fit for purpose and what is important. Our key focus is students achieving their best.

Can students leave the VI Form site during break and lunchtime?

At break and lunch time, students are free to leave the site. We have an onsite cafe which is open all day, offering Costa coffee and a range of hot and cold meals and snacks.

Can I use the VI Form student car park?

Yes, Year 13 students have their own dedicated car park and can apply for a parking permit at main reception. Students are asked to show the MoT certificate and insurance documentation for their vehicle.



FAQs Continued

Is there any financial support available for books or transport?

The 16-19 Bursary is designed to help support students who face the greatest barriers to continuing in education or training post-16. An example of bursary use could be for transport costs, equipment or materials for courses.

The scheme is administered at The Island VI Form and receipt of bursary is conditional upon high attendance to lessons and a good attitude to learning.

The bursary application takes household income into account and students who are entitled to free school meals are automatically entitled to apply. Young people in defined vulnerable groups must provide supporting evidence of their circumstances to prove eligibility.

The bursary scheme is dependent on funds provided by the ESFA (Education & Skills Funding Agency), which are limited and students are assessed on an individual basis.

Full details of eligibility and application forms are available on The Island VI Form website.

Will there be after school activities and sports team opportunities available?

Yes, there are a number of activities for students to be involved in, including: Duke of Edinburgh's Award Scheme; pre-driver training courses and numerous sporting activities.

Can I use the VI Form Gym?

Yes! Students must complete a health questionnaire and attend an induction before their student lanyard is enabled so that they can gain access to the gym. Students are expected to use the equipment safely at all times and clean the machines after using them. Access to the gym is free but students must observe the rules when using it.





Courses

The following pages give an overview of each course being offered at The Island VI Form for the 2025-2026 academic year. We have the largest number of A level courses on the Isle of Wight and a range of vocational courses, so there is a combination to suit everyone.

If you would like more information about any of the courses or would like to have a chat with any of our subject teachers, please get in contact by emailing:

info@theislandviiform.org.uk



Applied Science

BTEC

Level 3 AAQ BTEC national extended certificate, designed for students with an interest in science along side other subjects. Designed for post-16 students with an interest in science and aiming to progress to higher education as a route to graduate level employment. Equivalent to one A level in size, it is suitable for students looking to develop their applied knowledge and practical skills in science alongside two A levels.

Course Content

- Principles and applications of Biology assessed by external examination
- Principles and applications of Chemistry assessed by external examination
- Principles and applications of Physics assessed by external examination
- Practical scientific procedures and techniques assessed by Internal assessment
- Scientific investigation skills assessed by internal assessment



Career Opportunities

This qualification can lead to progression to various degree courses, such as:

- BSc (Hons) Applied Sport and Exercise Sciences
- BSc (Hons) Nursing
- BSc (Hons) Biochemistry

It could also lead to apprenticeships in allied health care professions and engineering.



A Level

The art and design A level is suitable for anyone with a real interest in the visual arts. We will help you to develop into an independent and resourceful student whilst supporting you to learn new skills and approaches, to prepare you for the next stage of your career or university.

Course Content

You will have the opportunity to explore a variety of different workshops using the full range of conventional skills as well as printmaking, ceramics, photography, and digital manipulation to reflect the breadth of opportunities in the art and design sector.

Art and Design

Visits to galleries and practitioners, both local and abroad, will help to inspire and inform your work to ensure that you continue to build a rich and exciting portfolio. If art has not been studied at GCSE level, an interview with a portfolio is required with a focus on drawing.

Career Opportunities

Qualifications in art and design will support further study at Foundation or Degree level specialising in: fashion, textiles, graphics, illustration, animation, media and advertising, film making, 3D design and more.

Our students leave us to study degree level courses in film production, photography, graphics, illustration, animation, marine photography and textiles to name a few.



Biology

Course Content

This is a two year course. Year one builds on prior knowledge of biological molecules and cells and this is then applied to exchange and transport, genetic diversity and selection.

Year two develops and extends these ideas further to include topics such as respiration, photosynthesis, homeostasis, genetics, evolution and gene technologies.

All assessment is at the end of the course by three exams. There is no coursework requirement, however, your performance during practicals will be assessed by your teacher and through the final exams.

Career Opportunities

Biology will open the door to a multitude of career options including, medicine, nursing, pharmaceuticals, veterinary science, physiotherapy, oceanography, conservation and environmental science to name a few. The analytical and problem solving skills learnt whilst studying biology will also be valuable in further education and employment.

A Level

The course builds on knowledge gained from GCSE and investigates how living organisms work and the connections between them. This course has increased emphasis on understanding and application, in addition to recall, and this is evident from the comprehensive list of practicals included.

Biology will develop both your knowledge and practical skills ready for your next step either into a variety of degrees or careers.

Business

A Level

Business A level is designed to give a broad and balanced introduction to business as a basis for further training and study. Allowing students to develop general skills, knowledge and understanding that underpins all occupations and professions.

This programme will enable you to investigate areas within business, the economy and industry and provide skills for future employment and academic business courses. You are encouraged to foster imaginative and creative thinking as well as developing an understanding of the world of business and recognise its value to the local, national and international community.

Course Content

Students will study four units over the course of the 2 years:

- Marketing and people
- Managing business activities
- Business decisions and strategy
- Global business



Career Opportunities

Business programmes can lead to apprenticeships, employment, university degrees and professional courses. It often leads on to careers in retailing, finance, management, marketing and human resources.

Chemistry

A Level

This course has increased emphasis on understanding and application rather than recall, and this is evident from the comprehensive list of practicals included. This course will build on knowledge gained from GCSE and has a natural progression. It will develop you into an able chemist, setting up the opportunity of taking the next step to undergraduate studies with confidence.

Course Content

Units include topics on physical chemistry such as rate, equilibrium and energy, as well as organic chemistry ranging from simple hydrocarbon reactions to more complicated reactions based on benzene. In addition, this course will include current chemistry topics such as those relating to the environment and possible alternative energy provision.

Year two builds on year one, and will be assessed through three exams at the end of the course. There is no coursework requirement, however, your performance during practicals will be assessed by your teacher and through exams.



Career Opportunities

Chemistry will open the door to a multitude of career options including medicine, veterinary science, pharmacy and forensic science to name a few. It also offers the opportunity to continue studying chemistry at degree level. The analytical and problem solving skills learned whilst studying chemistry are also valuable for both further education and employment.



A Level

This is an increasingly popular A level which offers students the opportunity to explore aspects of Ancient Greek and Roman culture in depth. The new specification is an academically rigorous course that centres on the study of ancient literature, history, politics and archeology.

Course Content

The first year of the course introduces students to the fascinating world of Ancient Greece and looks closely at the important role of religion in society. The second year focuses on Ancient Rome and how the first emperor Augustus persuaded the Roman people to accept him as

Classical Civilisation

an imperial monarch. Students also study poetry including Homer's Iliad, an epic poem on the famous Trojan War that the Greeks themselves considered the foundation of their culture, and Virgil's Aeneid. Assessment is by three separate exams taken at the end of the second year. There is no coursework component.

Career Opportunities

There are many classical courses available at universities, or the qualification could support study in history, literature, politics, law, sociology or philosophy. The skills gained from studying this A level will be highly regarded in all areas of higher education and also attractive to prospective employers.



Computer Science

Course Content

Problem solving, programming, algorithms, data representation, computer components, the stored program concept, software development, networking and the internet. Students will also choose a practical project which will showcase their programming skills.

A Level

This course is aimed at students who are keen on practical computer work, programming and especially solving computing related problems. The A Level computer science qualification helps students understand the core academic principles of computer science. Classroom learning is transferred into creating real-world systems through the creation of an independent programming project. The A level will develop the student's technical understanding and their ability to analyse and solve problems using computational thinking.

Career Opportunities

Most students carry on to study computer science at university and it is possible to follow courses such as computer science, artificial intelligence, games design, games programming, or software engineering. Computer science is also increasingly combined with many other university subjects e.g. Business, Art, Music, Maths, Sciences etc.

Criminology

Applied Diploma

This course is for students interested in the study of crime and the impact that such studies have on society.

From learning theories of criminality to analysing criminal situations and making recommendations for policy through to examining information to review verdicts in criminal cases. Throughout the course students will learn to differentiate between myth and reality when it comes to crime and to recognise that common representations may be misleading and inaccurate.

They develop skills in reviewing criminal cases, evaluating the evidence in the cases to determine whether the verdict is safe and just, and understanding of the organisations which are part of our system of social control and their effectiveness in achieving their objectives.

Course Content

Students will study four units over the course of the 2 years:

- Unit 1: Changing awareness of crime
- Unit 2: Criminological theories
- Unit 3: Crime scene to courtroom
- Unit 4: Crime and punishment



Career Opportunities

The main purpose of the WJEC level 3 applied diploma in criminology is to use the qualification to support access to higher education degree courses such as: BSc Criminology, BA Criminology, BA Criminology and Criminal Justice, BSc (Hons) Criminology and Psychology, LLB (Hons) Law with Criminology, BA (Hons) Criminology and Sociology, BA (Hons) Criminology, BSc (Hons) Psychology and Sociology and BSc Criminology with Law.

Drama & Theatre Studies

A Level

This course is a mix of practical drama and dramatic theory. You will be introduced to texts from a wide range of genres, styles and historical contexts. Workshops will also introduce a range of theatre practitioners to develop theatrical knowledge and skills. The course will consist of practical workshops and theory-based lessons linked to these to ensure an in-depth understanding.

You will be given the opportunity to work in different styles of theatre so that by the end of the course you will have an extensive skill base and an understanding of the theory behind it. You will be encouraged to be creative and experimental and to get as much experience of drama outside the classroom as possible.

Course Content

Unit 1: Theatre workshop

Unit 2: Text in action

Unit 3: Text in performance



Career Opportunities

You can progress to study aspects of drama and theatre studies at university or to work in a related field of employment using the knowledge you have gained from this A level.



BTEC

BTEC National Extended Certificate - equivalent to one A level.

The study of human development is a rich and varied subject. Children's play, learning and development focuses on the areas of physical growth and development, cognitive ability, the acquisition of language and social and emotional advances from birth to eight years.

Choosing this qualification enables learners to acquire the theoretical knowledge, practical experience and in-depth understanding required for a future career working alongside

Early Childhood Development

children. The course is widely recognised by both higher education establishments and industry allowing an excellent pathway to either.

Course Content

Work is assessed via external exams, internally assessed coursework and the formation of a practical evidence portfolio with opportunities to visit a work-based setting.

Unit 1 - Children's Development - External (now 0-8 years)

Unit 2 - Keeping Children safe - External

Unit 3 - Play and Learning - Internal

Unit 4 - Research and Reflective Practice in an Early Years Setting - Internal

Career Opportunities

This course enables progression to either higher education, early years educator apprenticeships or full employment.

Careers in childhood studies, primary education, early years, midwifery or pediatric nursing are just a handful of opportunities opened up by this course.



English Language

Whatever route you take, studying English Language at an advanced level will reward you with a deeper awareness of yourself and your place in the world.

Studying English Language will also provide you with a technical understanding of linguistics; the way words, sounds, meanings and structure are interwoven to make the texts you see and hear each day. You will develop your analytical and discursive essay writing, enhance your ability to write originally and to appreciate the craft of the writer, and learn how to engage meaningfully with academic research and debate.

A Level

When you stop and think about it, using the English language is one of the most complex things you will ever master, and yet you probably got to grips with it before you even set foot inside a school.

Language is integral to practically every aspect of human life. You might explore the dramatic historical events that led to the modern English you use today, or relive the process of child language acquisition. You could engage with the politically-charged problems of racism and sexism, or tune in to and map out the rich variety of regional dialects around you. Or, you could plot the ever-changing path of current and future language use as English finds its place in the 21st century.

Career Opportunities

A level English Language is highly regarded by universities for a variety of undergraduate courses across the humanities, including modern foreign languages, as well as business and law, and social and human science degrees.

English Literature

A Level

At the heart of A level English literature is the experience of reading. You will have been reading - and reading people's stories - throughout most of your life, and this course is an opportunity to take that a step further: to develop as a reader, and to explore ways of reading more deeply and widely.

You will encounter a wealth of texts, by different writers, in different times - from the drama of Shakespeare right through to emerging 21st century poets, dramatists and novelists. Every text brings with it a weight of social, historical, and cultural issues that influence and shape it and its readers, and you will be able to assess these critically and enjoy one of the great benefits of studying literature: the opportunity to examine and discuss your thoughts with others.

You will also develop as a writer, especially in your analytical and essay writing: pinpointing precisely the literary methods in texts that generate the effects we experience as readers, and learning how to express your own ideas and interpretation of them meaningfully and in a purposeful and academic way.



There are also opportunities to write creatively, experimenting yourself with the methods literary writers use.

Career Opportunities

A level English literature is a strong choice for anyone applying for university, whether to study English further itself, or to use what you have learned in other subjects, in particular media, film, and journalism, and the wider fields of the humanities, including law, languages, and the social sciences, as well as creative writing courses.

Fashion & Textiles

Single Award

Cambridge Technical Introductory Diploma

This course aims to develop individuals who aspire to become part of an exciting and innovative industry. This subject is one of the best performing in the VI Form. Our students go on to further study at Foundation or Degree levels in the area of Fashion and Textiles.

The skills learnt on this course offer an insight into a diverse and exciting industry in the UK. Students will complete a variety of design briefs linking with industry, as well as taking part in exciting workshops.

Typical projects include textile and surface pattern design, fashion design and garment construction. The course is 100% coursework and aims to build a portfolio.

Students will also have the opportunity to make and exhibit their own fashion.



Course Content

The qualification is equivalent to one A level.

Career Opportunities

Students go on to study:

Fashion and textile design, illustration, fashion promotion, buying and marketing. This can lead to successful and fulfilling jobs working for high street and designer fashion brands.



Cambridge Technical Diploma

Students who choose this course will complete an extended version of the single award. Project briefs will be more varied and give students the opportunity to study Fashion and Textiles in more detail.

Double Fashion students will build a more technical skill level and more variety within their projects. Double students will develop a strong portfolio for further study in this area. We have excellent links with universities and our students go on to study a wide variety of BA courses in the area of Fashion and Textiles.

Fashion & Textiles

Double Award

The skills learnt on this course offer an insight into a diverse and exciting industry in the UK. Students will complete a variety of design briefs linking with industry, as well as taking part in exciting workshops.

Typical projects include fashion illustration, textile and surface pattern design, fashion marketing, fashion design and garment construction. The course is 100% coursework.

Course Content

The qualification is equivalent to two A levels.

Career Opportunities

Students go on to study: Fashion and textile design, illustration, fashion promotion, buying and marketing. This can lead to successful and fulfilling jobs working for high street and designer fashion brands.



Film Studies

A Level

Many consider film to be the main cultural innovation of the 20th century. Students who study it characteristically bring with them a high degree of enthusiasm and excitement for what is a powerful and culturally significant medium, inspiring a range of responses from the emotional to the reflective.

Film studies offers students the opportunity to investigate how film works from both a representation mode and as an aesthetic medium.

Course Content

This two year A level course will equip learners with the ability to demonstrate knowledge and understanding of the significance of film and film in practice in national, global and

historical contexts, films key contexts in relation to social, cultural, political and technological mediums and how film generates meanings and responses as both a student and a spectator. It also aims to enable learners to apply critical approaches to film and apply knowledge and skills to the making of film and screenwriting. Production work is a crucial part of this course and, by studying a diverse range of films and different contexts, students are given the opportunity to apply their knowledge and understanding of how films are constructed through their own filmmaking and screenwriting.

Career Opportunities

Film offers a wide variety of careers in both the production and creative elements. There are many different university courses, apprenticeships or direct work in a related field of employment. The skills and knowledge you will gain from this A level will prepare you for whichever route you choose. There are careers on both sides of the camera, from cinematography to editing, from script writing to directing and all of the sub-elements such as sound, lighting and post-production.

Geography

A Level

There has never been a better or more important time to study geography. Climate change, the issues and challenges of international migration, environmental degradation and the challenge of living in a more hazardous world, show that geography is one of the most relevant courses you could choose to study. Whatever your passion for the world, whether it be fascination with landscapes or concerns about societal inequality, geography will provide you with knowledge and transferable skills that will reward you personally and academically.

Course Content

You will develop and apply your understanding of geographical concepts, interpreting our changing world; develop your awareness of the complexity of interactions within and between societies, economies, cultures and environments at scales from local to global. Core physical themes are water/carbon cycles and landscape systems. The core human themes are global systems/global governance and changing place/changing places. There will be a minimum



of two fieldwork days in year 12 and four days overall for A level. Teacher assessed independent investigation at A level will count for 20%.

Career Opportunities

You can go on to study geography or a geography related degree.

Geographers often go on to work in careers associated with tourism, town or rural planning, the environment, hydrology, meteorology, coastal geomorphology, geology, forestry or agriculture. Geographers also develop skills (ICT, decision making etc) that are sought after in most areas of employment.

Geology

A Level

This is a science-based practical course giving students the opportunity to gain a greater understanding of the importance of Geology in real-world applications. This includes laboratory-based practical activities, leading to a practical endorsement and a residential fieldtrip to develop practical and analytical skills in the field. Students will develop skills to include observation, data collection, analysis and interpretation; the ability to handle information in a range of different mediums (numerical, oral, graphical); problem-solving skills and lateral thinking; as well as good written and verbal communication skills.

Course Content

During the 2 year course, you will study a wide range of geological concepts, processes and evidence - that allow learners to develop an understanding of geological principles and application to relevant real-life contexts. The areas of study include the main rock types and surface processes, the structure of the planet, exploration techniques and the formation of metal ores, engineering geology, geohazards, fossils and the evolution of life.



Career Opportunities

Geology develops many transferable skills that are highly desirable and can be used in a wide range of careers:

- The oil, gas & petroleum sector (exploration and development of energy resources)
- Civil engineering and construction
- Conservation and land management
- Hydrogeology (Groundwater flow, contamination and treatment)
- Waste management
- Archaeology, Oceanography and Marine Sciences



A Level

Studying politics helps you acquire a range of skills such as written and verbal communication, presenting and defending an argument and working with information in order to reach a judgement about differing points of view. You will also keep very up-to-date with current affairs, making politics a dynamic subject which is always relevant to what is going on in our country and the wider world.

Course Content

A level government and politics is a varied course which covers a range of subject matter and aims to provide an engaging and diverse learning experience.

Government & Politics

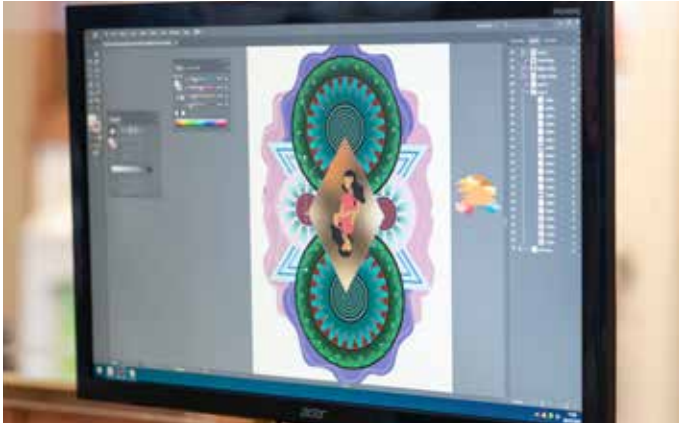
There are three units: UK Politics, US and Comparative Politics and a unit on Political Ideologies.

This course will be taught in a variety of ways, from the knowledge of experienced teachers, group discussion, student presentation, individual research, online learning and the study of political documents.

Career Opportunities

Government and politics offers a broad range of skills that can be applied to almost any university course or career path.

You will learn to examine evidence and to argue logically and explicitly. You will have the opportunity to present your opinions through a variety of mediums. Politics will work very well with any of the other humanities on offer and is looked at favourably by admissions tutors at universities.



Graphics

A Level

Graphic communication conveys information and ideas through visual means within a set of constraints. The increase in the use of information technology has led to changes in working practices and new ways of both communicating and presenting information. You will develop knowledge and understanding of design briefs, clients and audience; understand formal elements, techniques and their application to selected media.

Course Content

You will be taught techniques and skills that are relevant to industry and apply them to a combination of set briefs and personal investigations. Previous project briefs have ranged from editorial and fashion illustration to character design and corporate identity. You will learn publishing programmes including Photoshop, InDesign and Illustrator Creative Cloud.

Career Opportunities

You can progress to degree courses at university such as:

- Animation
- Illustration
- Graphic design
- New media

Health & Social Care

BTEC

The BTEC Level 3 National Extended Certificate in Health and Social Care is equivalent to one A level. This is a two year course assessed through a mixture of coursework and exams, which is designed for students wishing to gain employment in the health and social care sectors or progress to study at a higher level.

Course Content

This course is 50% exam and 50% coursework based and includes four units over two years which may include:

- Unit 1 - Human lifespan development (exam)
- Unit 2 - Human Biology and Health (exam)
- Unit 3 - Principles of Health and Social Care Practice
- Unit 6 - Safe Environments in Health and Social Care



Career Opportunities

The course is suitable for those who wish to follow a career in the caring industry, social work, nursing, speech therapy, podiatry, youth and community work or radiology.

History

A Level

A popular and successful option for those with a genuine interest in history. History is a widely respected academic A level that equips you with essential analytical and evaluative skills and the ability to carry out independent research and study.

The study of history at A level is looked upon favourably by both universities and employers. You will be offered the chance to present your opinions through a variety of mediums whether written or verbal. As more people choose joint or combined honour degrees at university, history becomes a viable option for anyone to study beyond traditional school life. The literacy skills required are transferable in virtually every other subject and the possibility of periods to study is endless.

Course Content

This is a two year course covering a breadth of both World and British history. You will pursue a unit of in-depth study for one element of the course and then a breadth unit for the second unit. There will be a combination of both exams and coursework. The coursework element is an extended piece



of writing of approximately 4000 words on the Stuarts period as an 'age of revolution' (a wide choice of topics including religion, warfare, medicine, science etc). The exam units covered will be: The British Empire 1857-1947, The Cold War 1945-91.

Career Opportunities

History offers a platform to a wide variety of careers: law, journalism, broadcasting, mass media, teaching and the civil service to name a few. More than this, it offers a broad range of skills that can be applied to almost any university course or career path. You will learn to examine evidence and to argue logically and explicitly.



A Level

Law helps people achieve their goals. It provides rules for setting up business, for getting married, and for owning a house. It provides protection for those who have a job, or make investments or who want to drive on the road. It supplies a framework for today's challenges such as internet copyright theft, environmental damage or the possibilities of genetic engineering. In short, law is what makes our society work. A level law offers students an opportunity to develop an understanding of law today using scenario-based problem-solving and discussions of current issues with a legal dimension. No previous knowledge of law is required.

Law

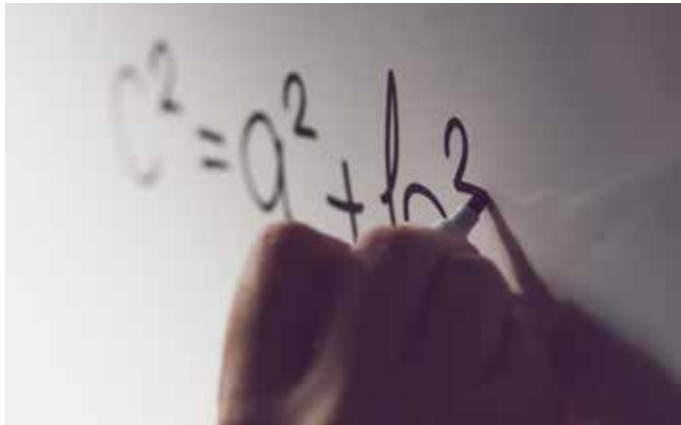
Course Content

The A level law course covers five themes:

- Criminal law: murder, manslaughter, non-fatal offences such as GBH, ABH, theft, robbery;
- Contract law: making and breaking a contract, misrepresentations, consumer rights in respect of faulty goods or services;
- Tort law: negligence leading to physical, psychiatric and economic loss, nuisances interfering with a person's ability to use their land;
- Law and society: the real world links between law, fault, justice and morality;
- The English legal system: sources of law, criminal and civil court cases, judges, juries and magistrates.

Career Opportunities

A level law is an obvious choice for those thinking of reading law at university, not least because it is a chance to find out about the subject before committing to a degree programme. Law is also useful for a range of other degrees which include a legal component such as business, accounting, human resources, journalism and criminology.



Mathematics & Further Mathematics

A Level

The study of mathematics and further mathematics allows us to provide courses that will: enable you to acquire knowledge and skills with confidence; provide satisfaction and enjoyment; give you experience of mathematical activity and develop resourcefulness in solving problems. It will also enable you to apply mathematics and recognise its significance to other disciplines; develop your understanding of mathematical reasoning; and provide students with a foundation for further study of mathematics.

Course Content

Pure mathematics forms the core for A level mathematics. You will continue to develop your understanding of algebra, trigonometry and numerical methods as well as vectors, kinematics, distributions and hypothesis testing. These are not isolated topics but have many links to each other and to areas of study in a range of other subjects. If further mathematics is to be studied, mathematics must also be chosen and a fourth subject is also recommended to offer opportunities for broader learning.

Career Opportunities

Whilst careers in engineering, the sciences, computing, actuarial work, economics and medicine have obvious links, mathematics is one of the most highly regarded A level subjects and is welcomed as part of your portfolio to many university courses and to a wide range of employment options.

Media Studies

A Level

The media plays a central role in contemporary culture, society and politics. It shapes our perceptions of the world through representations, ideas and the points of view they offer. The economic importance of media industries is unquestionable with millions of people employed worldwide. The globalised nature of the contemporary media, ongoing technological developments and more opportunities to interact with the media supports the belief that its importance in contemporary life will only increase.

Course Content

The two year A level course offers students the opportunity to develop a thorough and in-depth understanding of the key issues in today's society, using a variety of advanced theoretical approaches to support critical exploration and reflection, analysis and debate. The study of a wide range of rich and stimulating media products is central to the specification. Students will work from the product outwards to debate and analyse key critical questions related to all



aspects of the media. The subject content is wide-ranging and includes studies of music and video games, advertising and film marketing/production, newspapers and radio programmes, media language, representations, ideological approaches, audiences, media industries and blogs/vlogs and websites.

Career Opportunities

Media industries are one of the biggest employers in both the UK and Worldwide, whether your interest lies in production or in front of an audience. Most universities offer a wide range of media related courses including advertising, film, TV, radio and music production as well as more academic studies such as journalism and media law.

Modern Foreign Languages: French / Spanish

A Level

Studying a language at this level extends naturally from the skills developed at GCSE. Approximately equal stress is placed on each of the linguistic skills, together with the acquisition of knowledge about the contemporary culture and society of France or Spain and countries or communities where French or Spanish is spoken. You will be well prepared to use the language for practical communication and to continue your studies in higher education.

Course Content

The course involves the study of social issues and artistic culture in the target language of the country. There will also be the opportunity to study literary texts and films. In the second year you will continue to study these themes along with a look at political life and you will be required to research in detail one particular aspect of life in that country. Throughout the course, considerable emphasis will be put on improving the grammatical accuracy of your work.



Career Opportunities

With qualifications in A level languages, you could go on to study at university or work in commerce, the diplomatic service, leisure or tourism, the armed forces, teaching, the airline industry, the media or be a translator or interpreter.



Music

A Level

To study music at A level, you need to be able to read notation to a good standard, be able to play an instrument to at least grade 5 standard and be a competent composer. During the course you will be required to develop your aural skills, analyse music of various genres spanning works by such composers as Mozart, Schumann, and Stravinsky, through to Kate Bush and the Beatles, and film soundtracks such as Batman and Psycho. You will also be required to record a solo recital and compose to a given brief.

Course Content

The course structure comprises of Performance, Composition, and a written analytical exam. The GCSE Music qualification is a prerequisite for students wishing to undertake the A level course. Students who have not completed this qualification will be required to interview and audition on their instrument prior to acceptance onto the course.

Career Opportunities

Music A level is a requirement for applications to six UK music conservatoires and for most music degree courses. Music A level expands on the acquired skills and knowledge introduced at GCSE level and provides a firm grounding in the skills required to study music at university level. A music degree can assist you to pursue a career in performance as a member of an ensemble such as an orchestra or session work, composing for film and television, or teaching.



Music Technology

A Level

Are you interested in sound? Would you like to learn how to operate a mixing desk? Would you like to be the one in the 'hot seat' when bands are recording in a studio? Have you got a musical imagination for taking a tune and rearranging it? If you can answer 'yes' to the above questions, then Music Technology is the subject for you.

Course Content

You will learn to operate industry standard sequencing software. You will also use the same level of recording equipment, microphones and FX processors that are used in professional recording studios. Students will be faced with similar challenges that modern sound engineers and record producers face and will receive the training to tackle

them. You will also study how technology has developed and impacted the music industry. You will learn how music technology has developed in the 20th and 21st centuries, by listening and analysis.

Units include MIDI sequencing and audio recording using Cubase Pro, composition and arranging techniques, and the history and development of popular music. Students must have a good understanding of basic music theory to access this course; you may be invited to interview to assess suitability if you have not already studied a GCSE level Music qualification.

Career Opportunities

Successful students will have gained a range of skills appropriate for further education or employment in the music industry. This could include sound artists/ composers, sound engineers/producers in community music and education settings.

Photography

A Level

In this course you will study a range of themes working from still life to the natural world and experimental imagery. You will combine practical creation of your own images with critical studies of the work of photographers from past to present. You will develop and improve your knowledge and ability to take and enhance imagery digitally and, in some cases, using conventional wet photography. The majority of the course will be taught digitally using Adobe Photoshop, although all students will get the opportunity to work in the darkroom.

Course Content

If photography, graphics or art have not been studied to GCSE level, an interview with a portfolio may be required. All Photography students must have access to a high quality digital camera.



Career Opportunities

A portfolio of A level photography can give you the opportunity to pursue degree level courses in photography and/or lens based media. It can support other creative subjects and develops the ability to be able to approach problems in more inventive and non-linear ways. It can lead to careers in advertising, marketing, medical illustration, and forensic science.

Physics

A Level

It is an exciting and wide ranging subject which has an impact in almost every aspect of society and will give you skills and knowledge useful in many industries and degree courses.

Course Content

AQA physics first year A level introduces the amazing world of subatomic physics. Following this we study electricity, where you will develop your experimental skills far beyond GCSE. It also covers the mechanics of forces, why materials behave the way they do and how properties such as interference and diffraction affect light and other electromagnetic waves.

In the second year A level, these ideas are developed to a higher level in further mechanics and nuclear and thermal physics. Whilst our optional topic of astrophysics will allow students to develop their knowledge of physics in a specific application.

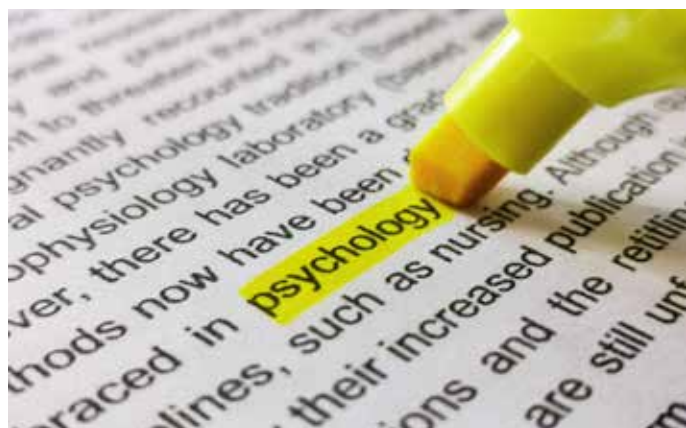
Physicists use ingenious methods to unlock the amazing secrets of our universe, by observing natural phenomena, gathering data and attempting to predict what might happen in new and unknown situations. They test their ideas and



come to conclusions often hard to believe. Physics gives us the fundamental knowledge from which almost all scientific research and study is based.

Career Opportunities

Physics will provide knowledge and skills such as decision making, teamwork, data-handling and computing along with the ability to work methodically and accurately. These are desirable for many degree level courses, particularly in the fields of science and engineering. Advanced level physics is also regarded as a valuable qualification in a range of industries including materials and composites fabrication, nuclear power, sustainable development and the armed forces.



A Level

Psychology is the scientific study of the mind and human behaviour and gaining a qualification in psychology can open the door to a number of career paths that require interaction or an understanding of human behaviour and development.

Course Content

Unit 1: Approaches (Comparing and contrasting five psychological approaches: biological, psychodynamic, behaviourist, cognitive and positive used to explain behaviour)

Unit 2: Research Methods

Psychology

Unit 3: Real World Implications (Studying three of the following: addiction, autism, bullying behaviour, criminal behaviours, schizophrenia or stress)

Career Opportunities

Psychology is a very popular subject at university level; however, it is an equally useful subject for studying other subjects at higher education, for example: law or nursing.

Careers relating to psychology include: police, nursing, teaching, counselling, human resources and personnel.

University study in psychology can lead to careers in areas of applied psychology, including: clinical, educational, sports, criminal, forensic, counselling, environmental and organisational psychology.



A Level

Religious Studies encompasses so many exciting areas and fields of study, it's hard to know where to begin! Philosophy of Religion explores massive philosophical questions such as 'what is God?', 'Does God exist?', 'What is the problem of evil?' and 'Is belief in God a psychological phenomena?'. Religion and Ethics will introduce you to some major ethical theories advising us on how we should live a good life whilst assessing their effectiveness when applied to issues such as medical ethics, nuclear war, animal experimentation, capital punishment and relationships. The third part of the course will introduce you to the practice, beliefs and philosophy of a major world religion, from its inception to modern day, from its festivals and ethical system to the philosophical concepts, you will develop an in depth knowledge of an interesting,

Religious Studies

popular worldview. Religious Studies includes the academic challenge of Philosophy, the rigorous debate provided by ethical theories and the appreciation of the impact religion has had on the world. Religious Studies gives you the opportunity to think clearly, critically and logically and to develop sound arguments verbally and in writing.

Course Content

The course is in three sections, equally weighted. There is no coursework and assessment will take place as examinations at the end of year 13. You will be assessed on your knowledge and understanding, ability to analyse, evaluate and support your judgements with examples from philosophy, ethics and religion.

Career Opportunities

Skills developed in A level Religious Studies can lead to a wide range of Humanities based university courses such as Philosophy, Politics and of course, Religion and Ethics. Possible careers that would benefit from an A level in RS are law, social work, public facing roles such as the service industry and armed forces are obvious examples.

Sociology

A Level

In sociology you must be able to examine your own views of the world and accept other peoples' point of view. You will be expected to form your own opinions and be able to back them up in a rational way. As with many subjects, you will be expected to keep up to date with current events. Be prepared to read extensively and participate in discussions.

Course Content

You will study six units over the course of the two years:

- Families and households
- Education
- Research methods
- Crime and deviancy
- Media
- Sociological theory



Career Opportunities

Sociology will open the door to many career options including social worker, teacher, social researcher and employment within the social services sector. Sociology can lead to higher education in one or more of the social sciences such as sociology, criminology, development studies, anthropology or more general higher education courses. The study of sociology will help you develop the skills, understanding and knowledge that is valued by employers across many different sectors.

Sport

Single Award

BTEC

BTEC National Extended Certificate

Single award = equivalent to one A level

The course covers a wide range of theoretical and practical topics in sport, giving a more in-depth level of study compared to level 2 courses. Each unit covers 25% of the whole course, with a lesser percentage of the overall grade coming from the exam. Students still need a good work ethic and a background in sport and science in order to be successful. Students should play sport outside of college and should be looking at going forward into a career in sport or other physically active pathway (e.g armed forces, emergency services etc).

Course Content

Four units over the two years, including:

- Anatomy and physiology - assessed by a written exam (25%)
- Fitness training and programming for health, sport or well being - assessed by a synoptic assessment (25%).



- Professional development in the sports industry - assessed by coursework (25%)
- Sports coaching - assessed by practical assessment and coursework (25%)

Career Opportunities

This course will prepare you for apprenticeships, higher education or employment in sports coaching, physical education, fitness instruction, sports development, sports management or sport and exercise science.



BTEC

BTEC National Diploma

Double award = equivalent to two A levels

The level 3 Diploma in Sport is taken alongside one other subject and covers a wider range of sporting topics than the single award. It will cover nine units within the two years and targets students who have their mind set on careers in sport. Students must play or be involved in a sport outside of college and should have a good work ethic to meet deadlines. A good qualification in both PE/BTEC level 2 sport and in GCSE science is required in order to be successful.

Sport

Double Award

Course Content

In addition to the units in the single award:

- Investigating a business in the sports and active leisure industry
- Practical sports performance
- Sports psychology
- Sports performance analysis
- Skill acquisition in sport

Career Opportunities

This course will prepare you for apprenticeships, higher education or employment in sports coaching, physical education, fitness instruction, sports development, sports management or sport and exercise science. Many students have gone on to top sporting universities after completing this course.



Travel & Tourism

BTEC

BTEC National Extended Certificate - equivalent to one A level.

The course is designed to support learners who are interested in learning about the travel and tourism industry. It works well in combination with sport, ICT, business, sociology and geography. The travel and tourism industry is one of the fastest-growing industries in the UK. The value of tourism to the UK economy is approximately £126 billion, and the sector employs around 3.1 million people.

Course Content

This qualification includes three mandatory units covering the following content areas:

- The travel and tourism industry in the UK is growing and is of major importance to the economy. You will develop the skills needed to examine, interpret and analyse a variety of statistics that measure the importance of tourism to the UK.
- Different types of destinations and their importance - you will investigate the features and appeal of global destinations.
- Marketing - students will study marketing, a mix of creativity, customer service and enticing customers into making a purchase. Students will be able to look at an organisation's customer service and marketing strategies before developing their own marketing plan for use by travel and tourism organisations. The qualification includes one optional unit which covers content relating to visitor attractions or event planning.

Career Opportunities

Students completing BTEC travel and tourism courses have progressed onto undergraduate courses, such as international tourism management and employment in travel and tourism business fields.

Additional Courses Under Consideration

Due to the large size of our VI Form cohort, we are able to consider the needs of the local community and offer additional courses, subject to demand.

Examples of courses we could offer, subject to demand, include:

- Mandarin
- Economics
- ICT BTEC

We are open to student led requests based on their needs and the requirements of the local labour market. Please email any requests to info@theislandviform as early as possible or indicate these on your application form.





Future Prospects:

Foundation Diploma in Art & Design

Fine Art | Fashion | Textiles | Photography | Graphics

This course is an incredible opportunity for young creatives aged 18/19 who are preparing for university or careers in the art & design sector. It is the only course of its kind on the Isle of Wight

Course Overview:

- Learn, develop, improve, design and create a portfolio of creative, experimental and practical work
- Expert specialised tuition and one to one guidance from an experienced teaching team
- Personalised careers and university admissions advice and guidance
- Enjoy access to a variety of workshops in a range of disciplines
- Pursue a career in fashion design / textile design / photography / fine art / illustration / graphics and many more creative disciplines.

For more information, please see the Island VI Form website or call and request to speak to a member of the Foundation Diploma course teaching team. A different application form is available for this course which can be found on the website.



The Island VI Form

Application Form - 2025

You can apply to join us from November 2024 and we would like as many applications as possible returned to us by the end of March 2025.

We will still accept applications after this date, but your choice of subjects may depend on availability.

Personal Details

Please print clearly, using capital letters, and complete all sections.

Legal Surname: _____

Legal First name/s: _____

Preferred First name/s: _____

Date of Birth: _____

Age on 31/08/2025: _____

Gender: ☐ Male ☐ Female ☐ Other

Nationality: _____

Country of Birth: _____

Address: _____

Postcode: _____

Home Tel: _____

Student mobile: _____

Student email: _____

Student signature: _____

We will keep you informed of any important information for prospective students via text and/or email.

Your choice of courses

Please select four course options you wish to study. If you are uncertain about your choices, don't worry, you will have several chances to discuss your options with our staff.

Please number your four subject choices in order of preference.

<input type="checkbox"/> Applied Science	<input type="checkbox"/> Health & Social Care
<input type="checkbox"/> Art & Design	<input type="checkbox"/> History
<input type="checkbox"/> Biology	<input type="checkbox"/> Law
<input type="checkbox"/> Business	<input type="checkbox"/> Mathematics
<input type="checkbox"/> Chemistry	<input type="checkbox"/> Further Mathematics
<input type="checkbox"/> Classical Civilisation	<input type="checkbox"/> Media Studies
<input type="checkbox"/> Computer Science	<input type="checkbox"/> MFL: French
<input type="checkbox"/> Criminology	<input type="checkbox"/> MFL: Spanish
<input type="checkbox"/> Drama & Theatre Studies	<input type="checkbox"/> Music
<input type="checkbox"/> Early Childhood Development	<input type="checkbox"/> Music Technology
<input type="checkbox"/> English Language	<input type="checkbox"/> Photography
<input type="checkbox"/> English Literature	<input type="checkbox"/> Physics
<input type="checkbox"/> Fashion & Textiles Single Award	<input type="checkbox"/> Psychology
<input type="checkbox"/> Fashion & Textiles Double Award	<input type="checkbox"/> Religious Education
<input type="checkbox"/> Film Studies	<input type="checkbox"/> Sociology
<input type="checkbox"/> Geography	<input type="checkbox"/> Sport: Single Award
<input type="checkbox"/> Geology	<input type="checkbox"/> Sport: Double Award
<input type="checkbox"/> Government & Politics	<input type="checkbox"/> Travel & Tourism
<input type="checkbox"/> Graphics	

Please give details of any additional courses that you would like us to consider: _____

Schools or Colleges you have attended since September 2022 (most recent first)

School or College: _____ From: _____ To: _____

School or College: _____ From: _____ To: _____

School or College: _____ From: _____ To: _____

Subjects Studied

Please list below details of subjects and qualifications you will have completed by June 2025.

Year Taken	Subject	Level (e.g. GCSE)	Grade or Predicted Grade

Support available to you

Any information you provide will be treated in the strictest confidence.

Do you have a disability and/or learning support need? ☐ yes ☐ no

If you have ticked yes, please tick the boxes that apply to you in the following questions.

Do you have an EHCP? ☐ yes ☐ no

If yes, please see additional information on page 15

A learning need (e.g. dyslexia, dyscalculia)? ☐ yes ☐ no

A health condition (e.g. epilepsy, diabetes, or other serious condition)? ☐ yes ☐ no

Physical or sensory (e.g. visual, hearing or mobility impairment)? ☐ yes ☐ no

If you have further information about your disability or learning support need, please specify below: _____

Have you previously had exam access arrangements? ☐ yes ☐ no

We use this information to enable students to integrate well and fulfil their potential. We would welcome the opportunity to discuss in advance how we can help those requiring additional support.

Parent/Carer details:

Parent/Carer name (including title e.g. Mr/Mrs/Miss etc): _____

Relationship to student: _____

Parent/Carer email: _____

Parent/Carer mobile: _____

Parent/Carer signature: _____

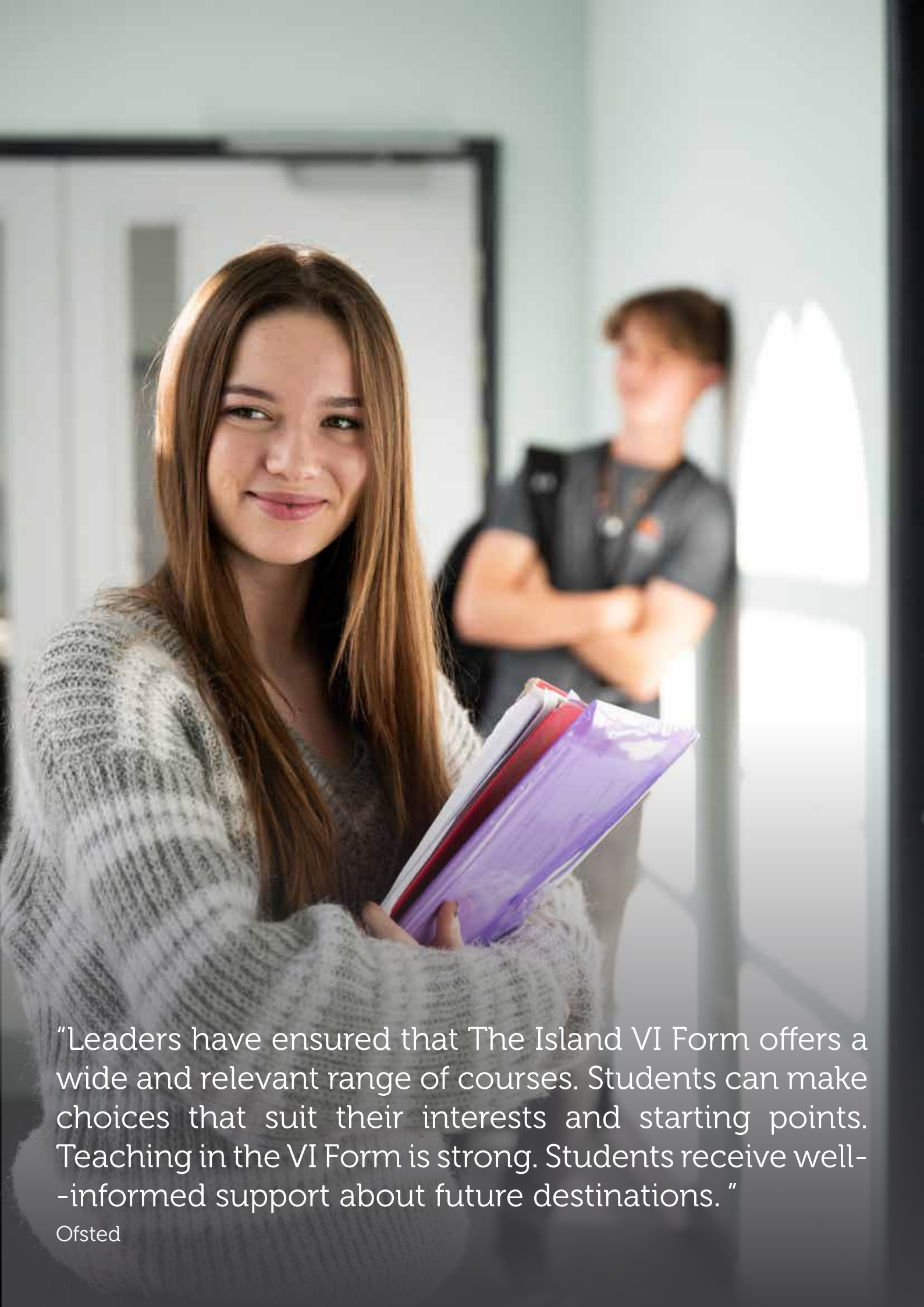
Date: _____

What happens next?

When you have completed this application form, please hand it in to reception at either Carisbrooke College, Medina College or The Island VI Form.

You will receive an invitation to attend an informal interview with the Head of VI Form when you will be able to discuss courses, student life at The Island VI Form and enrichment activities.

Thank you. We look forward to meeting you soon.



"Leaders have ensured that The Island VI Form offers a wide and relevant range of courses. Students can make choices that suit their interests and starting points. Teaching in the VI Form is strong. Students receive well-informed support about future destinations. "

Ofsted



The Island VI Form | Upper St James' Street | Newport | Isle of Wight | PO30 1LJ
Tel: 01983 522886 | Email: info@theislandviform.org.uk | Web: theislandviform.org.uk